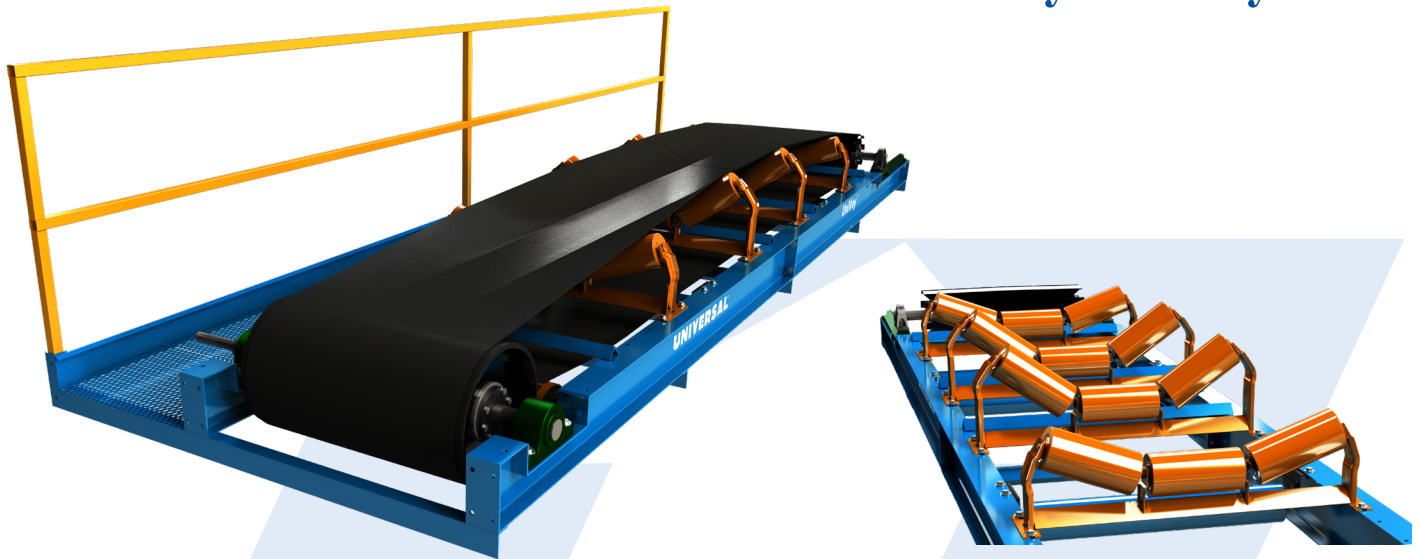


# Tri Roll Conveyor

UniVey<sup>®</sup> Conveyors



## SPECIFICATIONS

Model	TRI 18	TRI 24	TRI 30	TRI 36
Capacity @ 500 FPM	6,000 ft <sup>3</sup> /h 169.9 m <sup>3</sup> /h	13,200 ft <sup>3</sup> /h 373.8 m <sup>3</sup> /h	21,600 ft <sup>3</sup> /h 611.6 m <sup>3</sup> /h	31,800 ft <sup>3</sup> /h 900.5 m <sup>3</sup> /h
Belt Width	18" (457.2mm)	24" (609.6mm)	30" (762mm)	36" (914.4mm)
Unsupprted Length	20' (6.1m) Sections			
Length (Minimum)	37' (11.3m)			
Length (Maximum)	Consult Factory			
Belt Speeds	100 - 500 FPM (0.51 - 2.54 m/s)			
Head Shaft Bearings	Sealed Pillow Block Tapered Roller Bearing			
Head Pulley	16" (406.4mm) Dia. w/ 3/8" (9.5mm) Herringbone Lagging			
Idlers	4" or 5" (101.6 or 127mm) Dia. 35° CEMA-B			
Tail Shaft Bearings	Sealed Pillow Block Ball Bearing			
Tail Pulley	10" (254mm) Dia. Self Cleaning Wing Pulley			
Belt Take-up	18" (457.2mm)			
Frame	8" x 10" (203.2 x 254mm) Wide Flange Beam			
Construction	Powder Coated Carbon Steel			
Drive (Optional)	Shaft Mounted/V-Belt Reducer			
Optional Accessories	Dishcharge Housing, Top Weather Covers, Inlet Hopper, and Left and Right Catwalks			

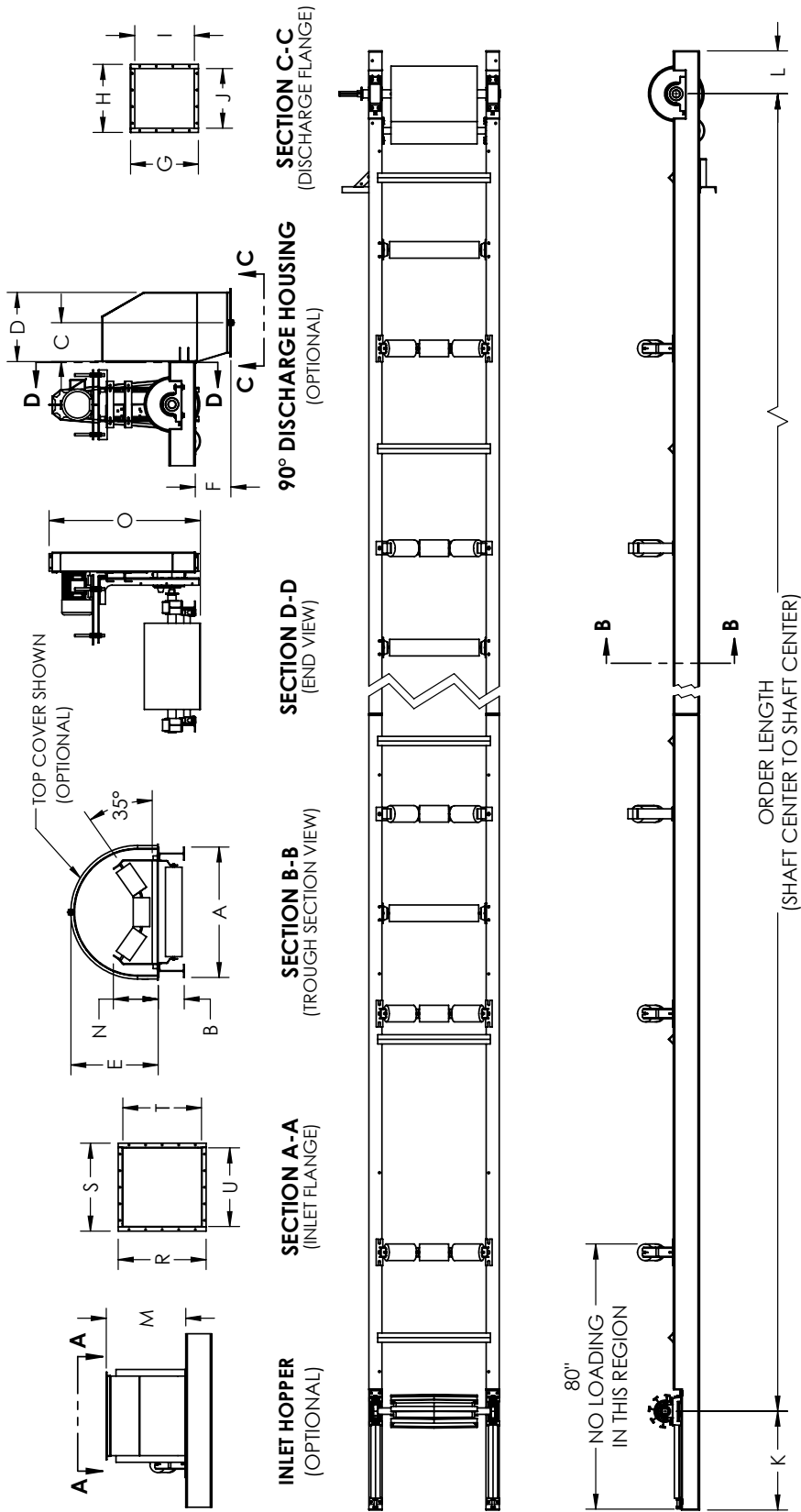
\*Specifications and designs are subject to change without notice



**THE TRADITION OF  
 EXCELLENCE CONTINUES!**

[www.universalindustries.com](http://www.universalindustries.com)

# Tri Roll Conveyor



Model	DIM	A	B	C	D	E	F	G	H	I	J	K	L	M	N	O	R	S	T	U
TRI 18	in	33.4	7.9	11.7	20.9	22.3	10.7	20.5	20.5	18.0	18.0	30.0	12.0	24.0	11.1	46.1	20.5	20.5	18.0	18.0
	mm	848	201	297	531	565	272	521	521	475	475	762	305	610	282	1171	521	521	457	457
TRI 24	in	39.4	7.9	11.7	20.9	25.9	10.7	20.5	20.5	18.0	18.0	30.0	12.0	24.0	12.2	46.1	20.5	20.5	18.0	18.0
	mm	1001	201	297	531	657	272	521	521	457	457	762	305	610	310	1171	521	521	457	457
TRI 30	in	45.4	7.9	14.7	26.9	28.3	10.7	26.5	26.5	24.0	24.0	30.0	12.0	24.0	13.4	46.1	26.5	26.5	24.0	24.0
	mm	1156	201	373	683	718	272	673	673	610	610	762	305	610	340	1171	673	673	610	610
TRI 36	in	51.4	7.9	14.7	26.9	31.3	16.7	26.5	26.5	24.0	24.0	30.0	12.0	24.0	14.6	46.1	26.5	26.5	24.0	24.0
	mm	1306	201	373	683	794	424	673	673	610	610	762	305	610	371	1171	673	673	610	610

\*Specifications and designs are subject to change without notice.

NOTE: Unit application, location and specifications determine the type, quantity and/or placement of electrical, electrical safety or other safety controls required. Whether these controls are supplied by Universal Industries or another supplier, all OSHA safety and health standards, the National Electrical Code and local codes must be met and followed. Because we constantly strive to provide the finest material handling equipment, establishing industry standards, specifications must remain subject to change without notice.