

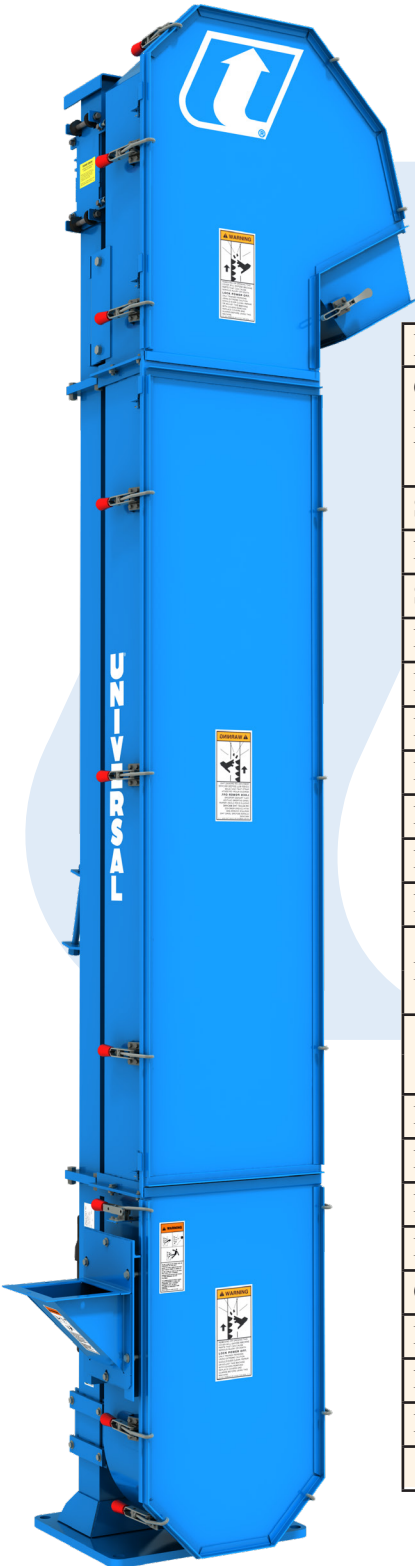


**MAKES TOTAL CLEAN OUT
AND INSPECTION A BREEZE**

BUCKET ELEVATORS

*up to 1,300 ft³/h
(36.8 m³/h)
1,000 BPH*

SPECIFICATIONS

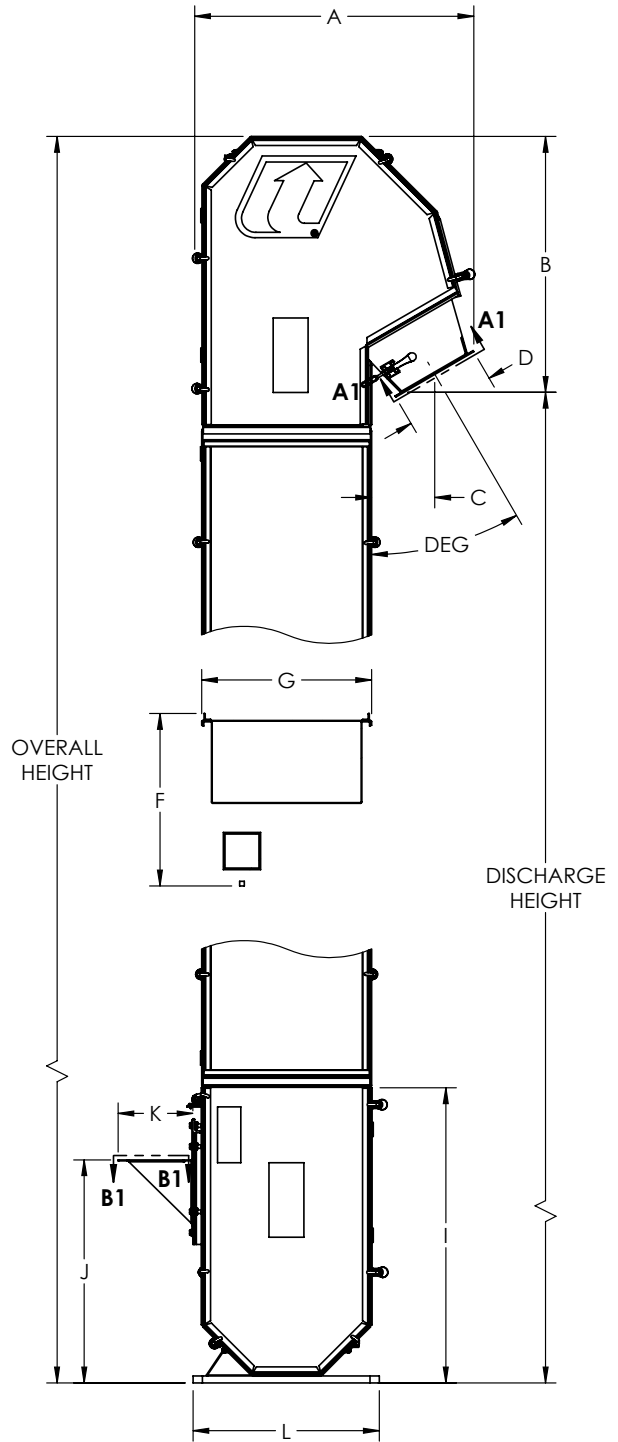
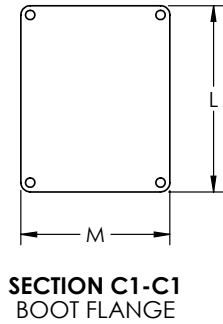
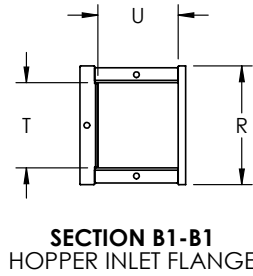
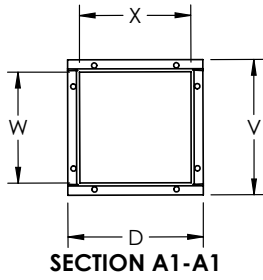
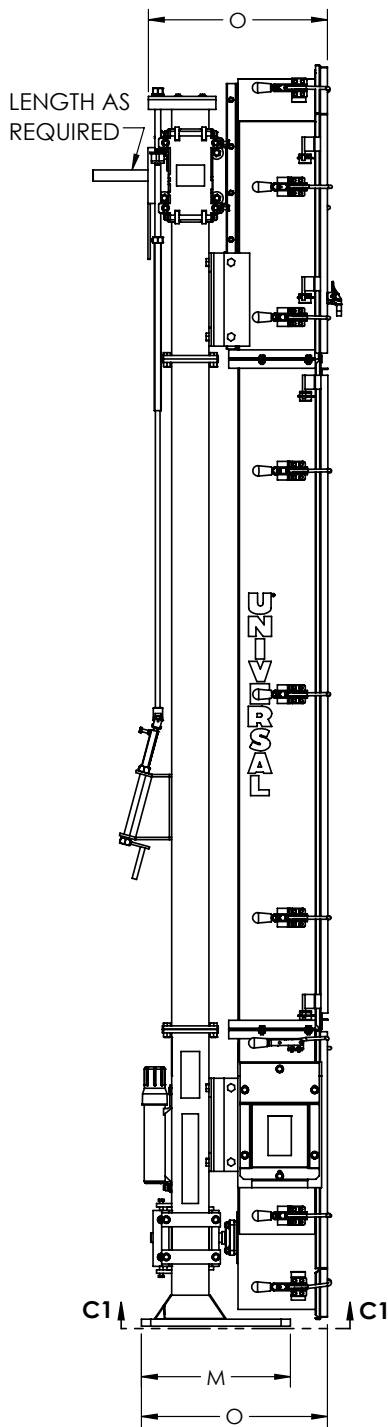


Model	SC 6X4	SC 7X4
Capacity - Free Flowing Material @ 110% Waterline Bucket Fill	240 - 800 BPH 300 - 1,000 ft ³ /hr 8.4 - 28.3 m ³ /hr	320 - 1,000 BPH 400 - 1,300 ft ³ /hr 11.3 - 36.8 m ³ /hr
Short TPH @ 50 lbs/Ft. ³	7 - 25	10 - 33
MTPH @ 50 lbs/Ft. ³	7 - 26	9 - 30
Short TPH @ 75 lbs/Ft. ³	11 - 38	15 - 50
MTPH @ 75 lbs/Ft. ³	10 - 34	13 - 45
Belt Speed FPM	99 - 316 (0.51 - 1.6 m/s)	
Head Shaft RPM	69 - 230	
Bucket Spacing	4¼" (107.95mm) Center Spacing	5" (127mm) Center Spacing
Head Casing	14 Ga.	
Head Shaft Bearings	Sealed Pillow Block Ball Bearing	
Head Pulley	5½" (139.7mm) Dia. w/ Vulcanized Rubber Lagging	
Buckets	6" X 4" (152.4mm X 101.6mm)	7" X 4½" (177.8mm X 114.3mm)
	HDPE, Optional Stainless Steel Available	
Belting	6½" (165.1mm)	8" (203.2mm)
	Wide PVC or Rubber	
Legging	14 Ga. Single Leg Welded Column with Access Door	
Boot Casing	14 Ga.	
Boot Shaft Bearings	Sealed Four Bolt Flange Ball Bearing	
Boot Pulley	5½" (139.7mm) Dia. Self-Cleaning Spoke Pulley	
Construction	Powder Coated Carbon or Stainless Steel	
Drive Package	Optional	
Motor	Optional	
Lining Options	Consult Factory	

*Units in Parenthesis are Metric (mm)

www.universalindustries.com

Model SC



Unit	A	B	C	D	F	G	I	J	K	L	M	N	O	R	T	U	V	W	X
in	31	27½	6¾	9¾	18½	18¼	31½	24	8½	20	16	20	20	8½	6	5¾	9½	8	8
mm	793	698	172	246	470	464	805	608	211	508	406	507	507	216	155	146	246	202	202

NOTE: Unit application, location and specifications determine the type, quantity and/or placement of electrical, electrical safety or other safety controls required. Whether these controls are supplied by Universal Industries or another supplier, all OSHA safety and health standards, the National Electrical Code and local codes must be met and followed. Because we constantly strive to provide the finest material handling equipment, establishing industry standards, specifications must remain subject to change without notice.