



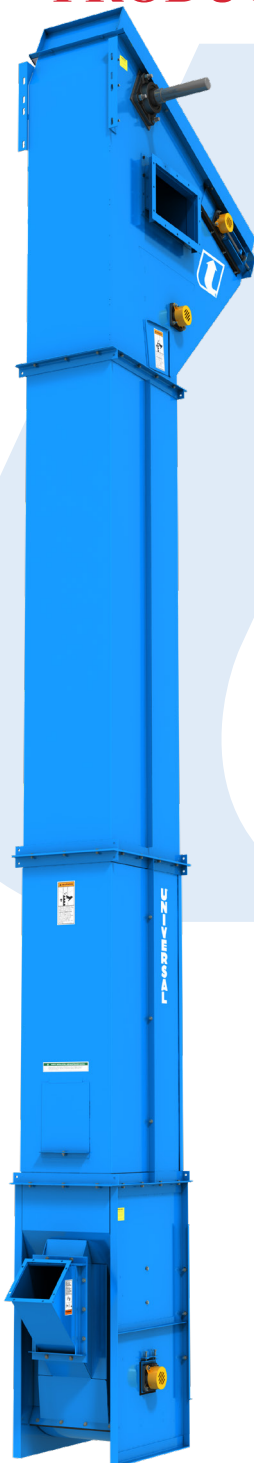
**Universal Industries**<sup>®</sup>  
 Universal Industries, Inc.

**P1300**

**SPECIALLY DESIGNED TO  
 PREVENT SPLITS, CRACKS,  
 AND SCARS THAT LOWER  
 PRODUCT VALUE**

**BUCKET  
 ELEVATORS**

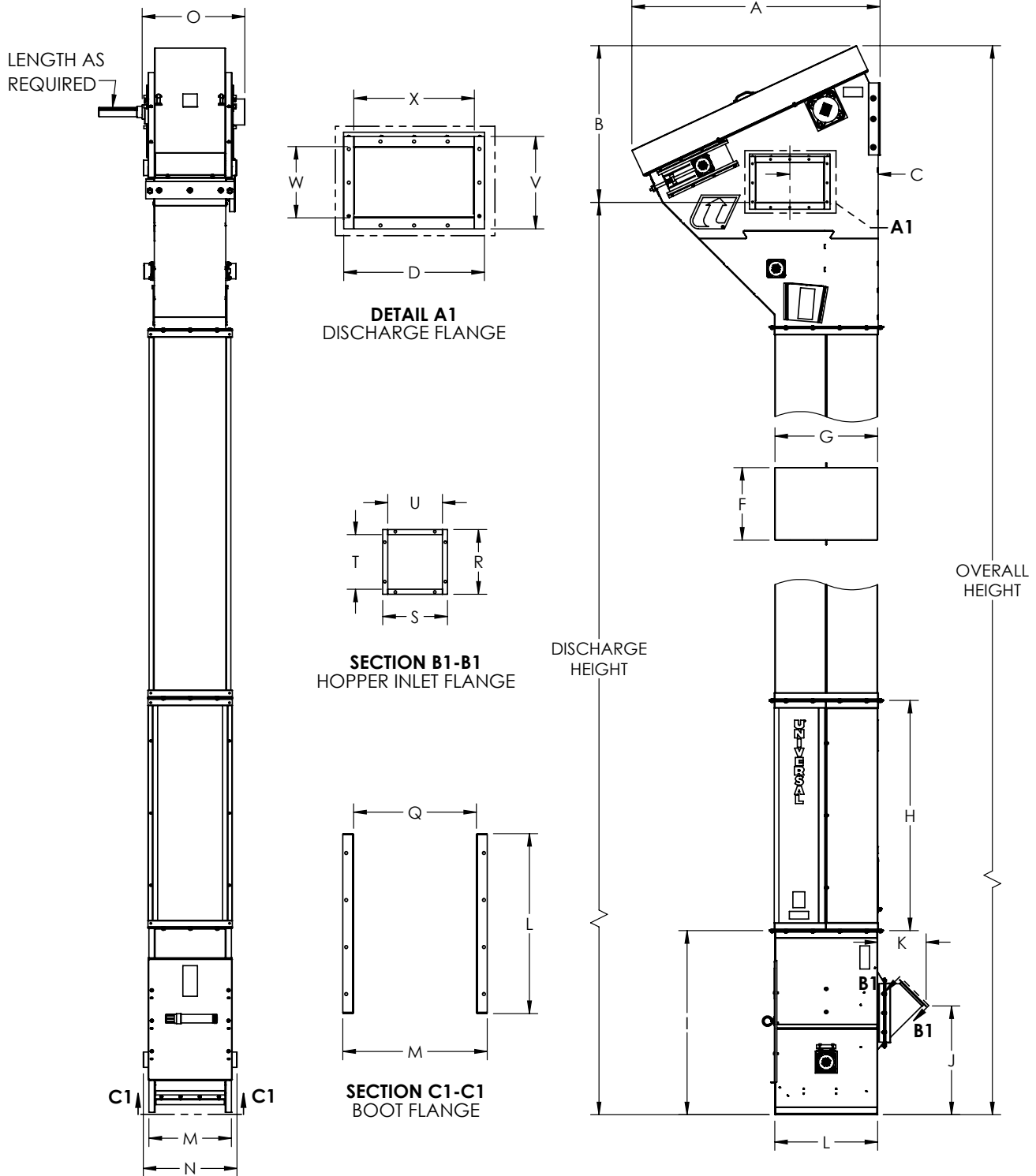
*up to 1,382 ft<sup>3</sup>/h  
 (39 m<sup>3</sup>/h)  
 1,110 BPH*



**SPECIFICATIONS**

<b>Model</b>	<b>P1300-60</b>	<b>P1300-90</b>
Capacity - Free Flowing Material @ 110% Waterline Bucket Fill	765 BPH 952 ft <sup>3</sup> /hr 27 m <sup>3</sup> /hr	1,110 BPH 1,382 ft <sup>3</sup> /hr 39 m <sup>3</sup> /hr
Short TPH @ 50 lbs/Ft. <sup>3</sup>	24	36
MTPH @ 50 lbs/Ft. <sup>3</sup>	21	32
Short TPH @ 75 lbs/Ft. <sup>3</sup>	37.5	54
MTPH @ 75 lbs/Ft. <sup>3</sup>	34	49
Chain Speed FPM	60 (0.3m/s)	90 (0.46m/s)
Head Shaft RPM	16.9	24.4
Bucket Spacing	6" (152.4mm) Center to Center Spacing	
Head Casing	11 Ga.	
Head Shaft Bearings	Sealed Four Bolt Flange Ball Bearing	
Sprockets	60B59H	
Buckets	11" X 6" (279.4mm X 152.4mm) HDPE	
Chain	C2060H	
Legging	14 Ga. Seam Welded Single Leg	
Boot Casing	11 Ga.	
Boot Shaft Bearings	Sealed Four Bolt Flange Ball Bearing	
Construction	Powder Coated Carbon, Galvanized, or Stainless Steel	
Drive Package	Optional	
Motor	Optional	
*Units in Parenthesis are Metric (mm)		

# Model P1300



Unit	A	B	C	D	F	G	H	I	J	K	L	M	N	Q	R	S	T	U	V	W	X
in	64 <sup>3</sup> / <sub>4</sub>	40 <sup>3</sup> / <sub>4</sub>	23	21	19	26 <sup>3</sup> / <sub>4</sub>	60	48	28 <sup>1</sup> / <sub>2</sub>	12 <sup>1</sup> / <sub>2</sub>	26 <sup>3</sup> / <sub>4</sub>	21 <sup>1</sup> / <sub>2</sub>	24 <sup>1</sup> / <sub>2</sub>	18 <sup>1</sup> / <sub>4</sub>	9 <sup>3</sup> / <sub>4</sub>	9 <sup>3</sup> / <sub>4</sub>	8 <sup>1</sup> / <sub>4</sub>	8 <sup>1</sup> / <sub>4</sub>	13 <sup>3</sup> / <sub>4</sub>	10 <sup>3</sup> / <sub>4</sub>	18
mm	1641	1038	584	532	480	679	1524	1219	721	320	681	545	620	464	244	244	206	206	349	280	456

NOTE: Unit application, location and specifications determine the type, quantity and/or placement of electrical, electrical safety or other safety controls required. Whether these controls are supplied by Universal Industries or another supplier, all OSHA safety and health standards, the National Electrical Code and local codes must be met and followed. Because we constantly strive to provide the finest material handling equipment, establishing industry standards, specifications must remain subject to change without notice.