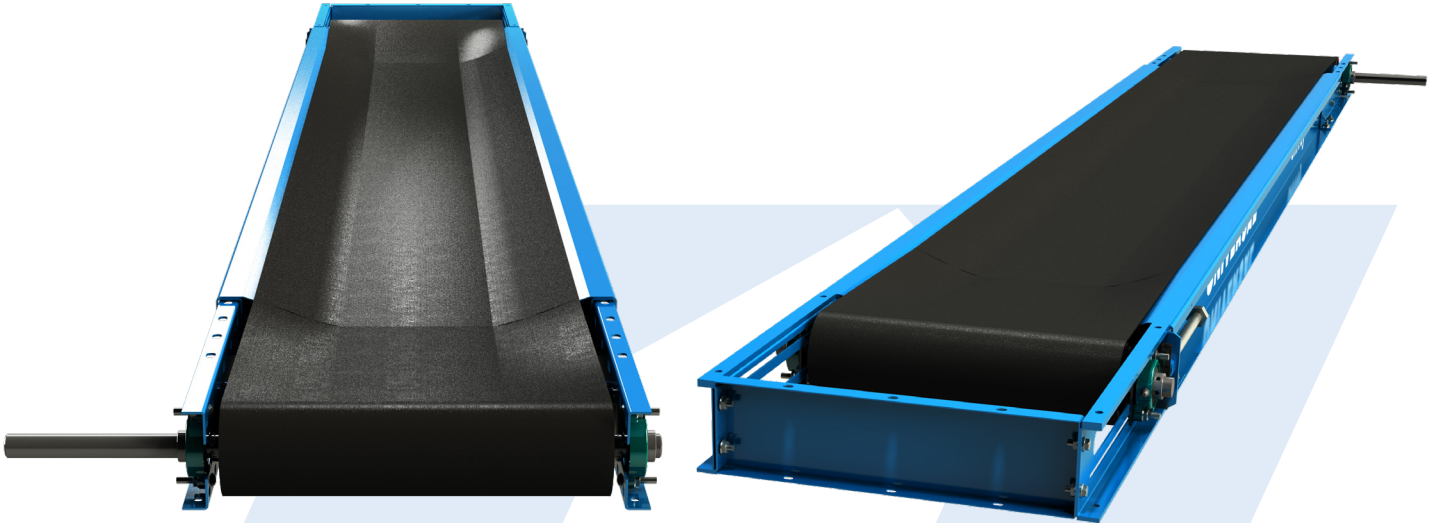




MPC Conveyor

UniVey® Conveyors



SPECIFICATIONS

Model	MPC 16	MPC 24
Belt Width	16" (304.8mm)	24" (609.6mm)
Length (Minimum)	5' (1.5m) Center to Center	
Length (Maximum)	30' (9.1m) Center to Center	
Belt Speeds	25 - 200 FPM (0.13 - 1.02 m/s)	
Head Shaft Bearings	Sealed Two Bolt Flange Ball Bearing	
Head Pulley	4-½" (114.3mm) Dia. w/ Vulcanized Rubber Lagging	
Tail Shaft Bearings	Sealed Two Bolt Flange Ball Bearing	
Tail Pulley	4-¼" (108mm) Dia. Self Cleaning Wing Pulley	
Belt Take-up	9-½" (241.3mm)	
Depth of Conveyor	4-½" (114.3mm)	
Depth of Trough	1-½" (38.1mm)	
Trough	16 Ga.	
Frame Construction	Powder Coated Carbon or Stainless Steel	
Drive (Optional)	Shaft Mounted Reducer	
Optional Accessories	Discharge Housing, Weather Covers, Inlet Hopper, and Skirted Sideboards	

*Specifications and designs are subject to change without notice

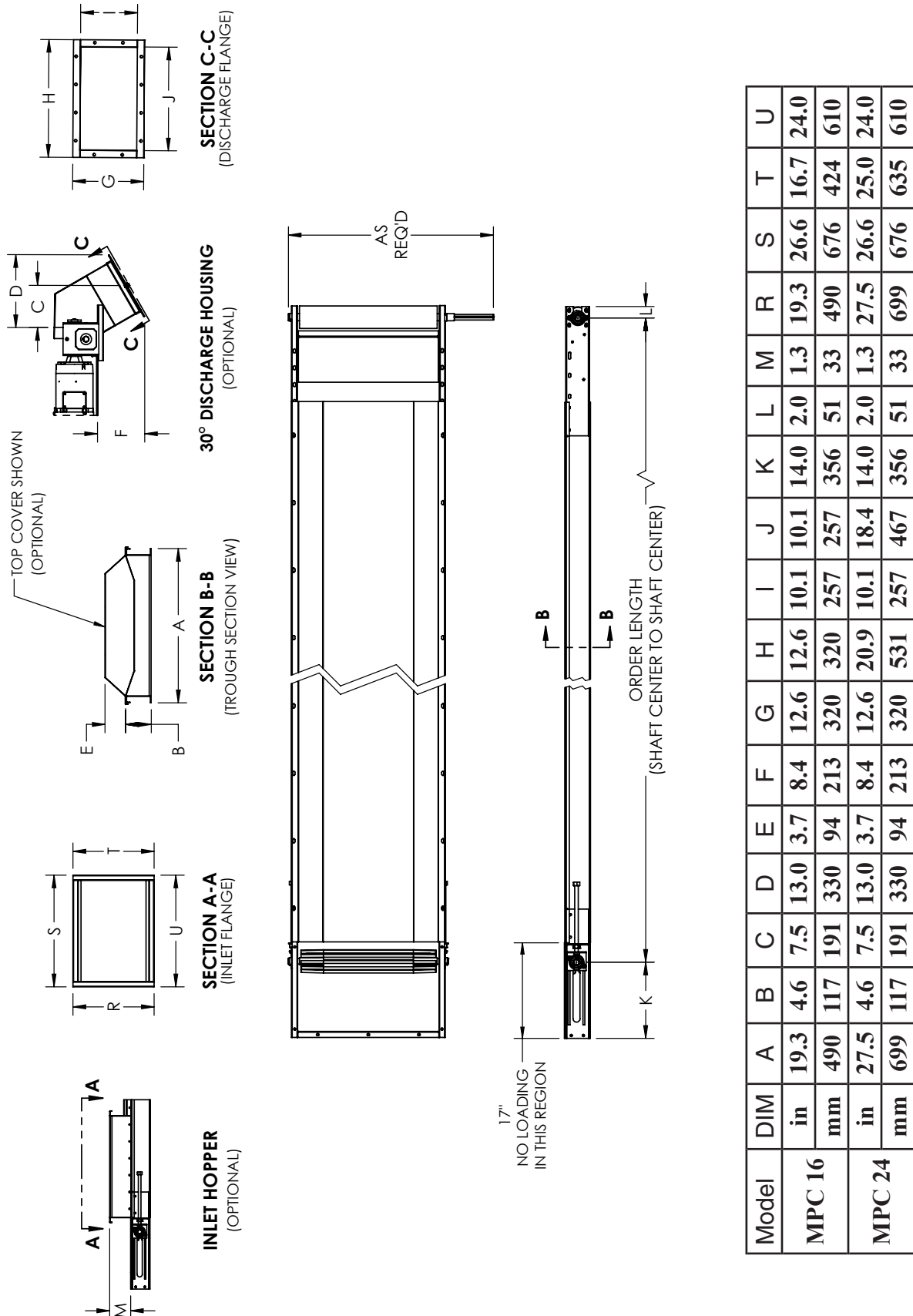


MADE IN THE U.S.A.

THE TRADITION OF EXCELLENCE CONTINUES!

www.universalindustries.com

MPC Conveyor



*Specifications and designs are subject to change without notice.

NOTE: Unit application, location and specifications determine the type, quantity and/or placement of electrical, electrical safety or other safety controls required. Whether these controls are supplied by Universal Industries or another supplier, all OSHA safety and health standards, the National Electrical Code and local codes must be met and followed. Because we constantly strive to provide the finest material handling equipment, establishing industry standards, specifications must remain subject to change without notice.