



**Universal Industries**<sup>®</sup>  
 Universal Industries, Inc.

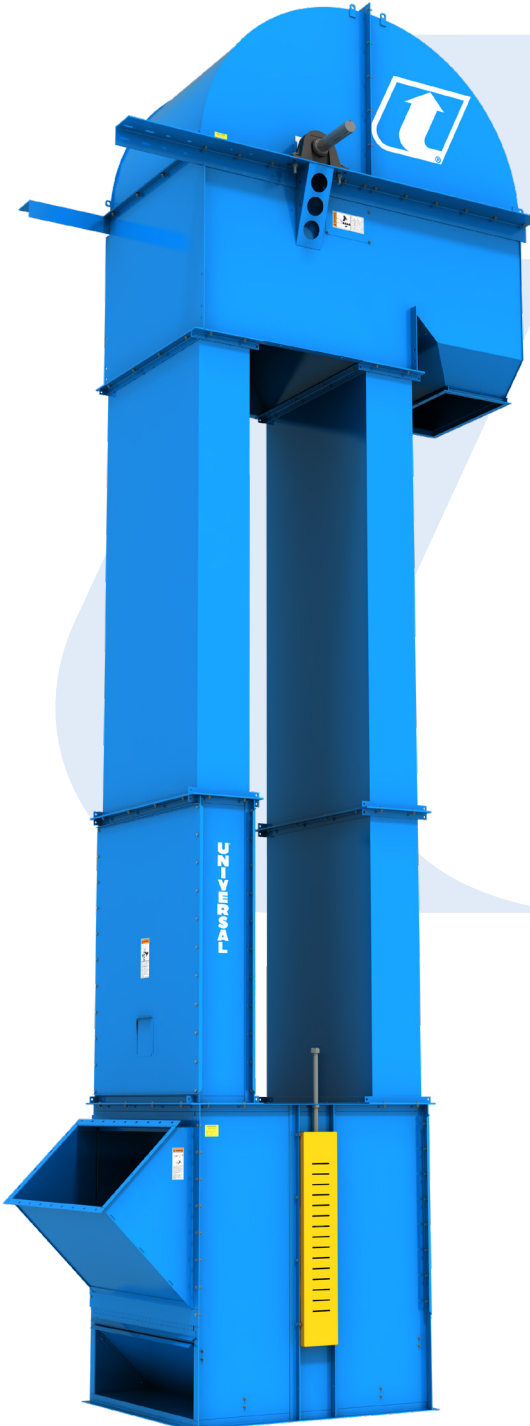
# G150

## BUCKET ELEVATORS

*up to 17,500 ft<sup>3</sup>/h  
 (498 m<sup>3</sup>/h)  
 14,100 BPH*

**IDEAL UNIT FOR HANDLING  
 PEANUTS IN THE SHELL  
 AND OTHER LIGHTWEIGHT  
 MATERIALS**

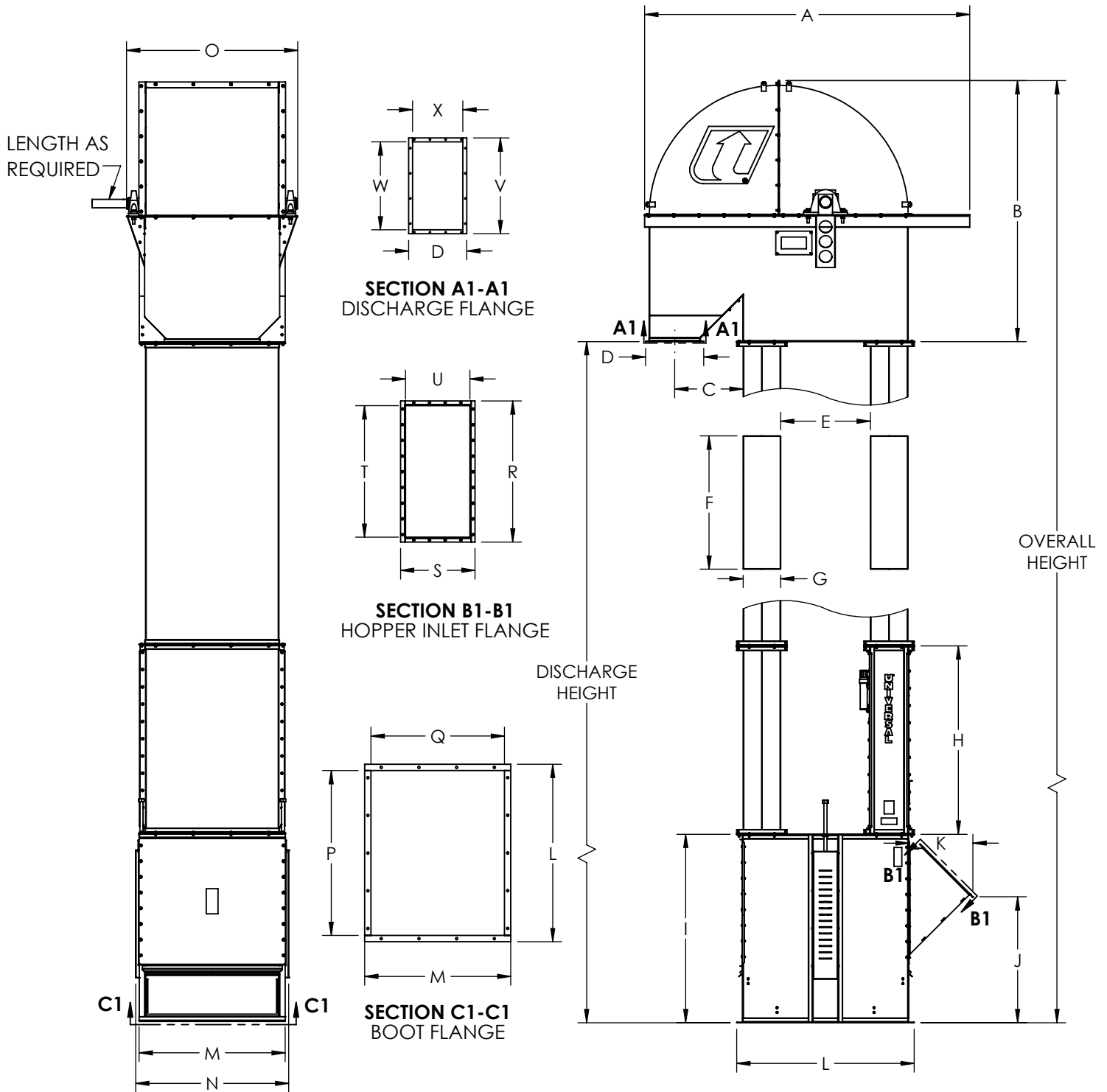
### SPECIFICATIONS



| Model   | G150   |
|---|--|
| Capacity - Free Flowing Material @ 110% Waterline Bucket Fill | 14,100 BPH<br>17,500 ft <sup>3</sup> /hr<br>498 m <sup>3</sup> /hr |
| Short TPH @ 15 lbs/Ft. <sup>3</sup>                           | 132  |
| MTPH @ 15 lbs/Ft. <sup>3</sup>                                | 120  |
| Short TPH @ 18 lbs/Ft. <sup>3</sup>                           | 158  |
| MTPH @ 18 lbs/Ft. <sup>3</sup>                                | 143  |
| Short TPH @ 22 lbs/Ft. <sup>3</sup>                           | 193  |
| MTPH @ 22 lbs/Ft. <sup>3</sup>                                | 175  |
| Belt Speed FPM  | 335 (1.7m/s)   |
| Head Shaft RPM  | 42   |
| Bucket Spacing  | 10" (254mm) Staggered  |
| Head Casing   | 7 Ga.  |
| Head Shaft Bearings   | Sealed Pillow Block Ball Bearing<br>Optional Tapered Roller        |
| Head Pulley   | 30" (762mm) Dia. w/ Vulcanized Rubber Lagging                      |
| Buckets   | 18" X 8" (457mm X 203mm) HDPE Double Row                           |
| Belting   | 38" (965mm) Wide PVC   |
| Legging   | 12 Ga. Twin Leg Seam Welded Columns                                |
| Boot Casing   | 7 Ga.  |
| Boot Shaft Bearings   | Sealed Two Bolt Flange Ball Bearing                                |
| Boot Pulley   | 30" (762mm) Dia. Self-Cleaning Wing Pulley                         |
| Construction  | Powder Coated Carbon, Galvanized, or Stainless Steel               |
| Drive Package   | Optional   |
| Motor   | Optional   |
| *Units in Parenthesis are Metric (mm)                         |  |

[www.universalindustries.com](http://www.universalindustries.com)

# Model G150



| Unit | A    | B    | C   | D   | E   | F    | G   | H    | I    | J    | K   | L    | M    | N    | O    | P    | Q    | R    | S   | T    | U   | V   | W   | X   |
|------|------|------|-----|-----|-----|------|-----|------|------|------|-----|------|------|------|------|------|------|------|-----|------|-----|-----|-----|-----|
| in   | 103½ | 83   | 21¾ | 18½ | 28½ | 42½  | 12  | 60   | 60   | 40   | 20¼ | 56½  | 46½  | 48¾  | 54½  | 52½  | 44½  | 43   | 23¾ | 42   | 20½ | 30½ | 28  | 16  |
| mm   | 2629 | 2111 | 553 | 470 | 725 | 1078 | 303 | 1524 | 1524 | 1018 | 516 | 1435 | 1181 | 1237 | 1384 | 1334 | 1130 | 1091 | 603 | 1064 | 520 | 775 | 711 | 406 |

NOTE: Unit application, location and specifications determine the type, quantity and/or placement of electrical, electrical safety or other safety controls required. Whether these controls are supplied by Universal Industries or another supplier, all OSHA safety and health standards, the National Electrical Code and local codes must be met and followed. Because we constantly strive to provide the finest material handling equipment, establishing industry standards, specifications must remain subject to change without notice.